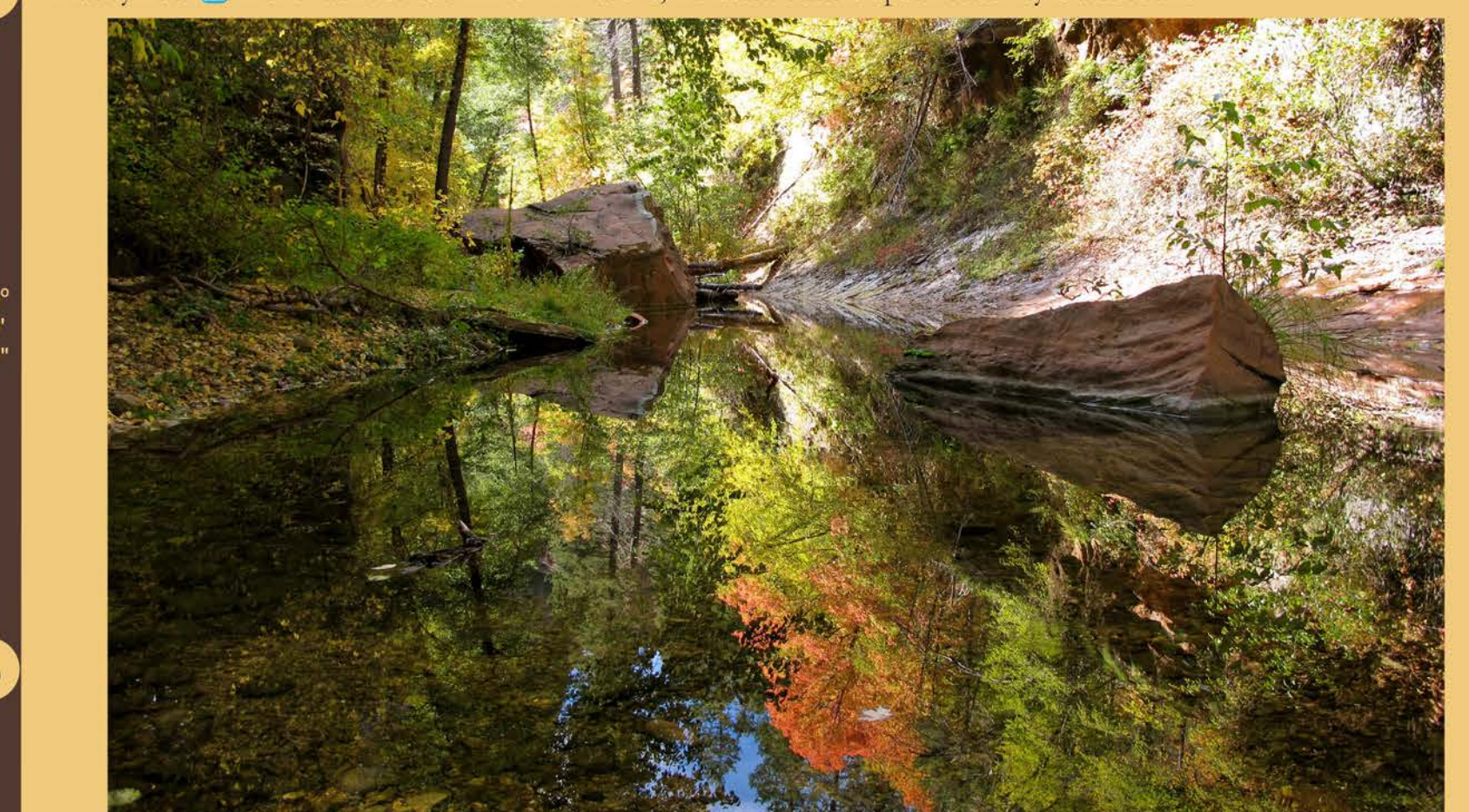


**RECREATION OPPORTUNITIES**

Site Name	Facilities	Season	Additional Information
Azusa Snowbowl	AS, B, C, D, E, F, G, H, I, J, K, L, M, N, O, P, Q, R, S, T, U, V, W, X, Y, Z	Seasonal	Winter sports area, summer chair lift. Fees may apply.
Azusa Lake	A, B, C, D, E, F, G, H, I, J, K, L, M, N, O, P, Q, R, S, T, U, V, W, X, Y, Z	All Year	Access to Oak Creek
Banjo Bill	A, B, C, D, E, F, G, H, I, J, K, L, M, N, O, P, Q, R, S, T, U, V, W, X, Y, Z	All Year	Access to Oak Creek
Beaver Creek	A, B, C, D, E, F, G, H, I, J, K, L, M, N, O, P, Q, R, S, T, U, V, W, X, Y, Z	All Year	Access to West Fork Oak Creek, Trailhead
Blue Ridge	A, B, C, D, E, F, G, H, I, J, K, L, M, N, O, P, Q, R, S, T, U, V, W, X, Y, Z	All Year	Access to West Fork Oak Creek, Trailhead
Bonito	A, B, C, D, E, F, G, H, I, J, K, L, M, N, O, P, Q, R, S, T, U, V, W, X, Y, Z	All Year	Access to West Fork Oak Creek, Trailhead
Butterfly	A, B, C, D, E, F, G, H, I, J, K, L, M, N, O, P, Q, R, S, T, U, V, W, X, Y, Z	All Year	Access to West Fork Oak Creek, Trailhead
Call O' the Canyon	A, B, C, D, E, F, G, H, I, J, K, L, M, N, O, P, Q, R, S, T, U, V, W, X, Y, Z	All Year	Access to West Fork Oak Creek, Trailhead
Canyon Vista	A, B, C, D, E, F, G, H, I, J, K, L, M, N, O, P, Q, R, S, T, U, V, W, X, Y, Z	All Year	Access to West Fork Oak Creek, Trailhead
Cave Springs	A, B, C, D, E, F, G, H, I, J, K, L, M, N, O, P, Q, R, S, T, U, V, W, X, Y, Z	All Year	Group use only, by reservation
Chavez Crossing	A, B, C, D, E, F, G, H, I, J, K, L, M, N, O, P, Q, R, S, T, U, V, W, X, Y, Z	All Year	Also group site by reservation
Clear Creek	A, B, C, D, E, F, G, H, I, J, K, L, M, N, O, P, Q, R, S, T, U, V, W, X, Y, Z	All Year	Also group site by reservation
Climb Well	A, B, C, D, E, F, G, H, I, J, K, L, M, N, O, P, Q, R, S, T, U, V, W, X, Y, Z	All Year	Access to Red Rock Crossing
Crescent Moon Ranch	A, B, C, D, E, F, G, H, I, J, K, L, M, N, O, P, Q, R, S, T, U, V, W, X, Y, Z	All Year	Access to Red Rock Crossing
Dairy Springs	A, B, C, D, E, F, G, H, I, J, K, L, M, N, O, P, Q, R, S, T, U, V, W, X, Y, Z	All Year	Nature Trail
Dokey	A, B, C, D, E, F, G, H, I, J, K, L, M, N, O, P, Q, R, S, T, U, V, W, X, Y, Z	All Year	Ruins and interpretive programs
Double Springs	A, B, C, D, E, F, G, H, I, J, K, L, M, N, O, P, Q, R, S, T, U, V, W, X, Y, Z	All Year	Group use only, by reservation
Elden Pueblo	A, B, C, D, E, F, G, H, I, J, K, L, M, N, O, P, Q, R, S, T, U, V, W, X, Y, Z	All Year	Ruins and interpretive programs
Elks	A, B, C, D, E, F, G, H, I, J, K, L, M, N, O, P, Q, R, S, T, U, V, W, X, Y, Z	All Year	Group use only, by reservation
Enchanted	A, B, C, D, E, F, G, H, I, J, K, L, M, N, O, P, Q, R, S, T, U, V, W, X, Y, Z	All Year	Winter Sports Area
Flagstaff Nordic Center	A, B, C, D, E, F, G, H, I, J, K, L, M, N, O, P, Q, R, S, T, U, V, W, X, Y, Z	All Year	Winter Sports Area
Forked Pine	A, B, C, D, E, F, G, H, I, J, K, L, M, N, O, P, Q, R, S, T, U, V, W, X, Y, Z	All Year	Access to Oak Creek
Grasshopper Point	A, B, C, D, E, F, G, H, I, J, K, L, M, N, O, P, Q, R, S, T, U, V, W, X, Y, Z	All Year	Access to Oak Creek
Halfway	A, B, C, D, E, F, G, H, I, J, K, L, M, N, O, P, Q, R, S, T, U, V, W, X, Y, Z	All Year	Prehistoric structures and rock art site
Honaki Ruin	A, B, C, D, E, F, G, H, I, J, K, L, M, N, O, P, Q, R, S, T, U, V, W, X, Y, Z	All Year	Prehistoric structures and rock art site
Kehl Springs	A, B, C, D, E, F, G, H, I, J, K, L, M, N, O, P, Q, R, S, T, U, V, W, X, Y, Z	All Year	Accessible Trail
Kendrick Park	A, B, C, D, E, F, G, H, I, J, K, L, M, N, O, P, Q, R, S, T, U, V, W, X, Y, Z	All Year	3 Double sites. Boats with electric motors
Knoll Lake	A, B, C, D, E, F, G, H, I, J, K, L, M, N, O, P, Q, R, S, T, U, V, W, X, Y, Z	All Year	RV's to 20'
Lakeview	A, B, C, D, E, F, G, H, I, J, K, L, M, N, O, P, Q, R, S, T, U, V, W, X, Y, Z	All Year	RV's up to 30'
Little Eden Spring	A, B, C, D, E, F, G, H, I, J, K, L, M, N, O, P, Q, R, S, T, U, V, W, X, Y, Z	All Year	Equine/camping only
Locket Meadow	A, B, C, D, E, F, G, H, I, J, K, L, M, N, O, P, Q, R, S, T, U, V, W, X, Y, Z	All Year	No RV's or Trailers
Long Valley	A, B, C, D, E, F, G, H, I, J, K, L, M, N, O, P, Q, R, S, T, U, V, W, X, Y, Z	All Year	Group use only, by reservation
Lower Lake Mary	A, B, C, D, E, F, G, H, I, J, K, L, M, N, O, P, Q, R, S, T, U, V, W, X, Y, Z	All Year	RV's to 24'. No trailers
Manzanita	A, B, C, D, E, F, G, H, I, J, K, L, M, N, O, P, Q, R, S, T, U, V, W, X, Y, Z	All Year	Group use only, by reservation
Moqui	A, B, C, D, E, F, G, H, I, J, K, L, M, N, O, P, Q, R, S, T, U, V, W, X, Y, Z	All Year	Group use only, by reservation
Narrows	A, B, C, D, E, F, G, H, I, J, K, L, M, N, O, P, Q, R, S, T, U, V, W, X, Y, Z	All Year	Group use only, by reservation
Olney	A, B, C, D, E, F, G, H, I, J, K, L, M, N, O, P, Q, R, S, T, U, V, W, X, Y, Z	All Year	Group use only, by reservation
Oak Creek Vista	A, B, C, D, E, F, G, H, I, J, K, L, M, N, O, P, Q, R, S, T, U, V, W, X, Y, Z	All Year	Overlook, Native Vendors
Palaki	A, B, C, D, E, F, G, H, I, J, K, L, M, N, O, P, Q, R, S, T, U, V, W, X, Y, Z	All Year	Ruins and Rock art site
Pine Flat	A, B, C, D, E, F, G, H, I, J, K, L, M, N, O, P, Q, R, S, T, U, V, W, X, Y, Z	All Year	RV's up to 30'
Pinegrove	A, B, C, D, E, F, G, H, I, J, K, L, M, N, O, P, Q, R, S, T, U, V, W, X, Y, Z	All Year	Some sites by reservation
Rock Crossing	A, B, C, D, E, F, G, H, I, J, K, L, M, N, O, P, Q, R, S, T, U, V, W, X, Y, Z	All Year	2 Double sites, Near C. C. Crain Reservoir
Upper Lake Mary	A, B, C, D, E, F, G, H, I, J, K, L, M, N, O, P, Q, R, S, T, U, V, W, X, Y, Z	All Year	Rock art interpretive site
Viv Ranch	A, B, C, D, E, F, G, H, I, J, K, L, M, N, O, P, Q, R, S, T, U, V, W, X, Y, Z	All Year	Winter sports area, seasonal facilities, fees may apply
Wing Mountain Snowplay	A, B, C, D, E, F, G, H, I, J, K, L, M, N, O, P, Q, R, S, T, U, V, W, X, Y, Z	All Year	Winter sports area, seasonal facilities, fees may apply

RESTROOMS, CAMPING, PICKNICKING, TUBBERS PERMITTED, BEAT LAUNCH, SHOWERS, FISHING, DRINKING WATER, FISH AREA

Blue symbol in the Facilities column ONLY above, indicates that the specific activity is accessible.



**COCONINO NATIONAL FOREST ARIZONA 2013**

Scale: 1:50,000  
 ELEVATION: 11,500, 10,000, 8,000, 7,000, 6,000, 5,000, 4,000, 3,000, 2,000

- National Forest Boundary
- Range District Boundary
- County Boundary
- Spatial Area Boundary
- Land Grant Boundary
- All Surveys - Patents, Appropriations, Decisions
- Township or Range Line
- Section Line
- Other Private Roads
- Gravel Road
- County Road
- Road Not Maintained for Passenger Cars
- 4WD Road
- Trail - Nonmotorized Use
- Trail - Motorized Use
- National Recreation Trail
- Power Transmission Line
- Interstate
- U.S.
- State
- County
- National Forest Primary Road, Suitable for Passenger Cars
- Other Federal Road, Suitable for Passenger Cars
- State Road, Suitable for High-Clearance Vehicles
- National Forest Trail Number
- South Up Area
- Coconino National Forest
- Wilderness and Other Specialty
- Land Administered by Other Agency
- Other Federal Land
- Bureau of Land Management
- Tribal Lands
- County Land
- State Land
- Wild and Scenic River
- Private Land within Forest Boundary
- Forest Supervisor's Office, Park Site
- Ranger District Office, Monument Hq.
- Other Forest Service Facility
- Group Camp, Group Campground
- Group Picnic Area, Picnic Area
- Trailhead, State's Viewpoint
- Point of Interest, Information
- Fish Hatchery, Cultural Interest
- Mental Cabin, Water Reservoir Access
- Fishing, Boat Ramp
- Interpretive Site, Wildlife Viewing Area
- Shooting Range
- Shooting, X-C Biking
- Recreation Area, Scenic Area
- Historical Current Station
- Located on Landmark Object
- Lookout (Operational, closed to public), Lookout (considered incorrect action)
- Boundary
- Control
- Windmill
- Gauging Station
- Loadback Gate
- Helipad
- Well
- Spring
- Shed Tank
- Camp/Range
- Cinder Hills Off Area

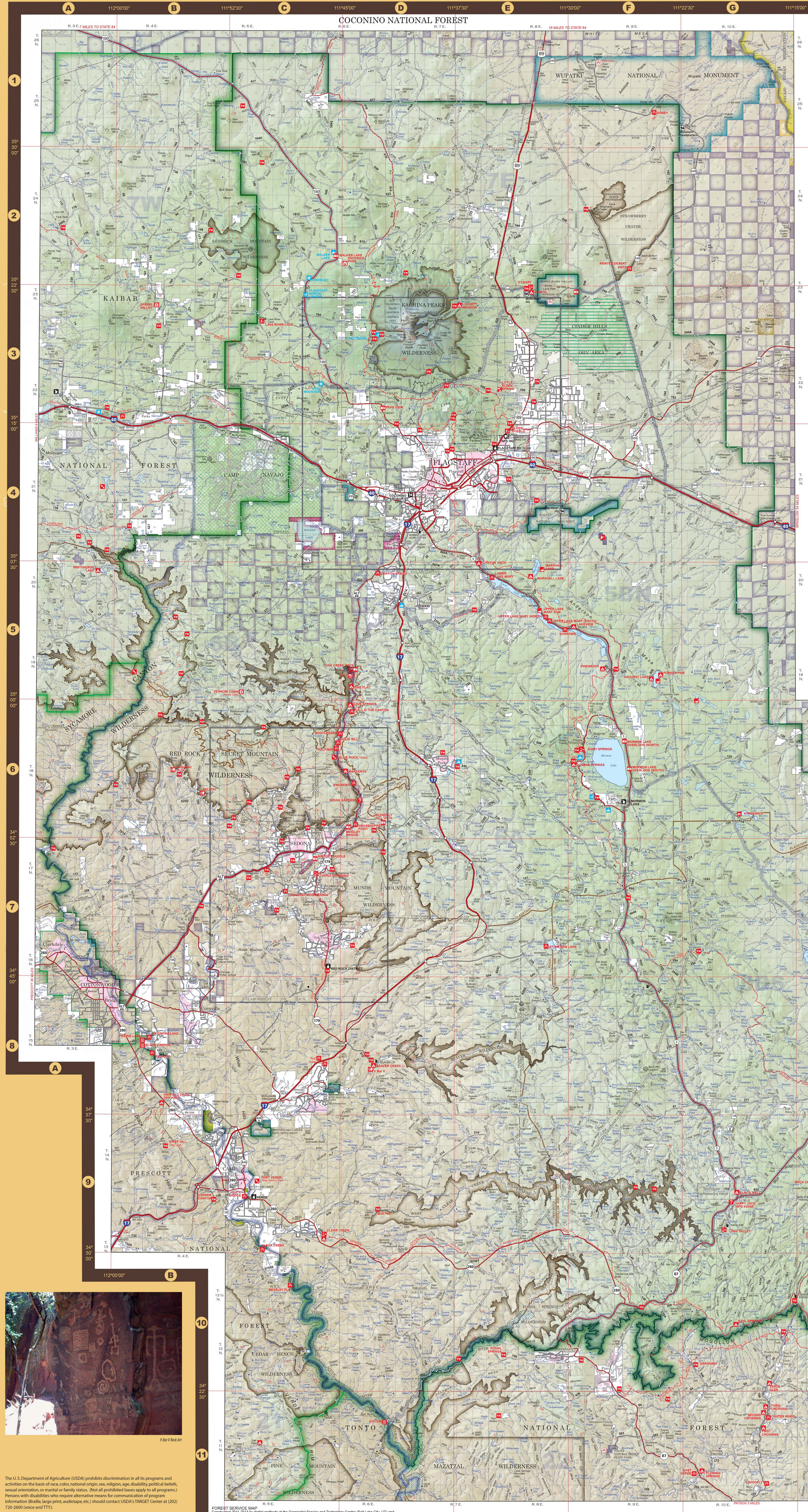
Legend for symbols and features:

- Circle with dot: Located on Landmark Object
- Circle with slash: Lookout (Operational, closed to public), Lookout (considered incorrect action)
- Circle with cross: Boundary
- Circle with triangle: Control
- Circle with square: Windmill
- Circle with diamond: Gauging Station
- Circle with plus: Loadback Gate
- Circle with asterisk: Helipad
- Circle with x: Well
- Circle with dot: Spring
- Circle with slash: Shed Tank
- Circle with cross: Camp/Range
- Circle with square: Cinder Hills Off Area

Scale: 1:50,000  
 ELEVATION: 11,500, 10,000, 8,000, 7,000, 6,000, 5,000, 4,000, 3,000, 2,000

Legend for symbols and features:

- Circle with dot: Located on Landmark Object
- Circle with slash: Lookout (Operational, closed to public), Lookout (considered incorrect action)
- Circle with cross: Boundary
- Circle with triangle: Control
- Circle with square: Windmill
- Circle with diamond: Gauging Station
- Circle with plus: Loadback Gate
- Circle with asterisk: Helipad
- Circle with x: Well
- Circle with dot: Spring
- Circle with slash: Shed Tank
- Circle with cross: Camp/Range
- Circle with square: Cinder Hills Off Area



The U.S. Department of Agriculture (USDA) prohibits discrimination in all its programs and activities on the basis of race, color, national origin, sex, religion, age, disability, political beliefs, sexual orientation, or marital or family status. (Not all prohibited bases apply to all programs.) Persons with disabilities who require alternative means for communication of program information (Braille, large print, audiotape, etc.) should contact USDA's TARGET Center at (202) 720-2600 (voice and TTY).

To file a complaint of discrimination, write USDA, Director, Office of Civil Rights, Room 326-W, Whitten Building, 1400 Independence Avenue SW, Washington, DC 20250-9410, or call (202) 720-5964 (voice or TTY). USDA is an equal opportunity provider and employer.

FOREST SERVICE MAP  
 Constructed 2013 by digital methods of the Geospatial Service and Technology Center (Salt Lake City, UT) and Southwest Regional Office (Flagstaff, AZ) using US Primary Base Series data. USGS and USDA FIS quadrangle maps. Land information source: the base map was compiled from BLM Surface Management data.

Albers Projection, Central Meridian 111°10'00", 1983 North American Datum