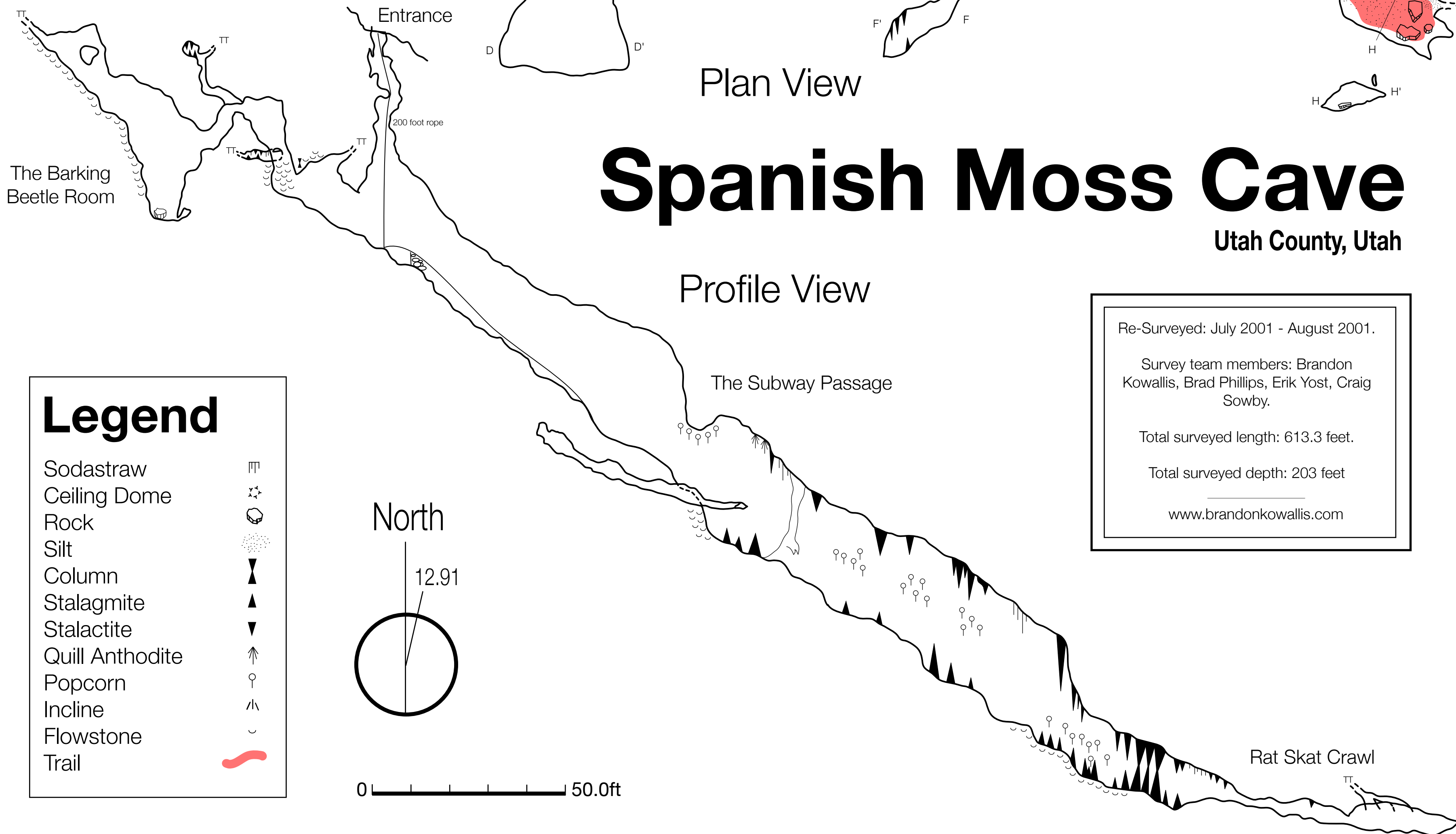
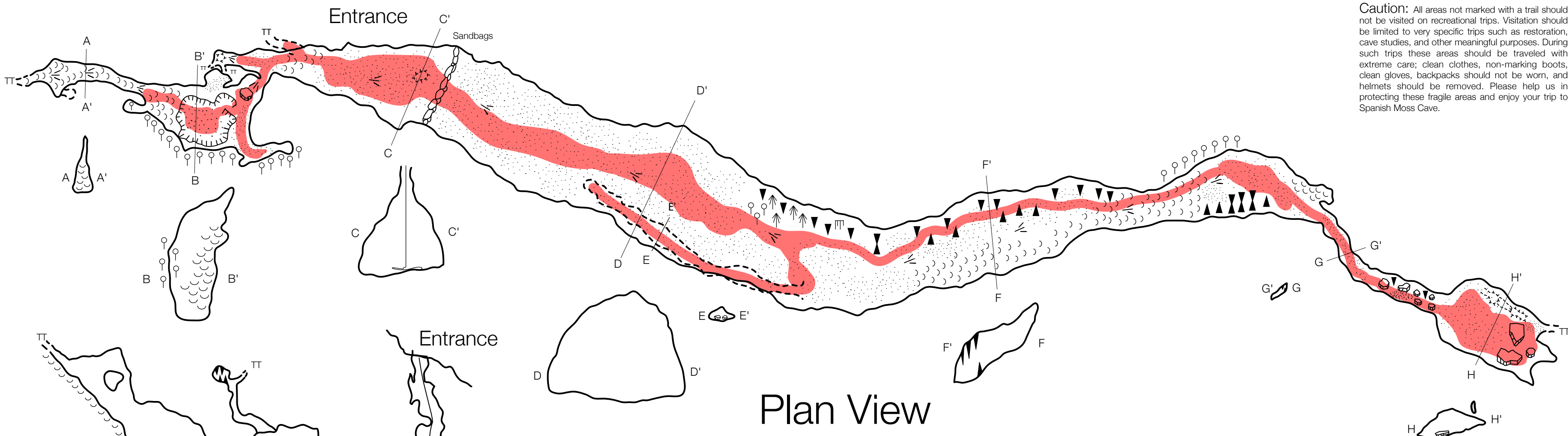


Caution: All areas not marked with a trail should not be visited on recreational trips. Visitation should be limited to very specific trips such as restoration, cave studies, and other meaningful purposes. During such trips these areas should be traveled with extreme care; clean clothes, non-marking boots, clean gloves, backpacks should not be worn, and helmets should be removed. Please help us in protecting these fragile areas and enjoy your trip to Spanish Moss Cave.

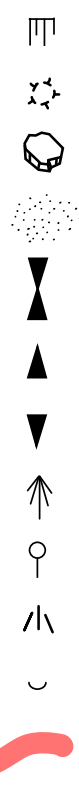


Spanish Moss Cave

Utah County, Utah

Legend

- Sodastraw
- Ceiling Dome
- Rock
- Silt
- Column
- Stalagmite
- Stalactite
- Quill Anthodite
- Popcorn
- Incline
- Flowstone
- Trail



Re-Surveyed: July 2001 - August 2001.

Survey team members: Brandon Kowallis, Brad Phillips, Erik Yost, Craig Sowby.

Total surveyed length: 613.3 feet.

Total surveyed depth: 203 feet

www.brandonkowallis.com