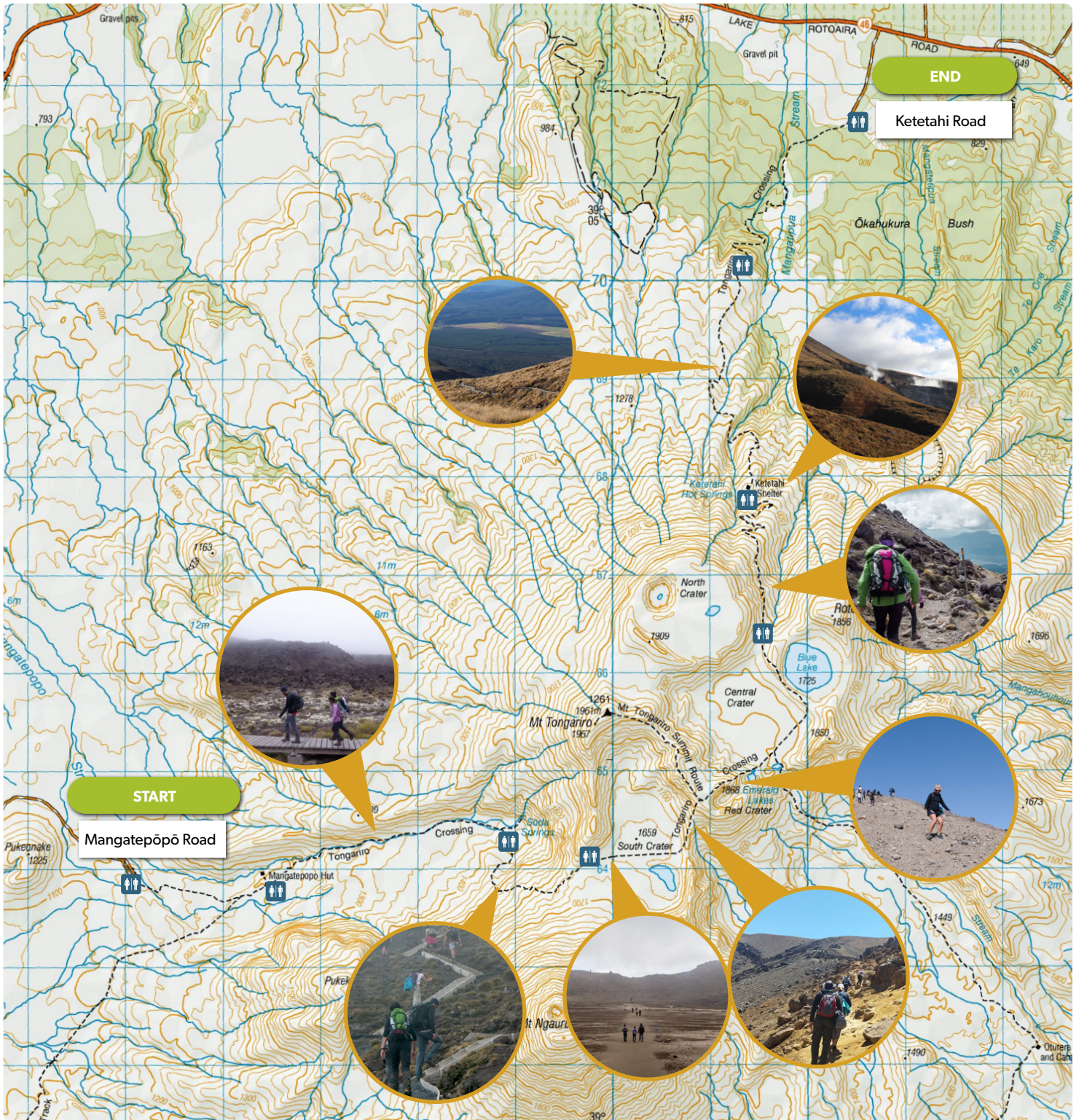
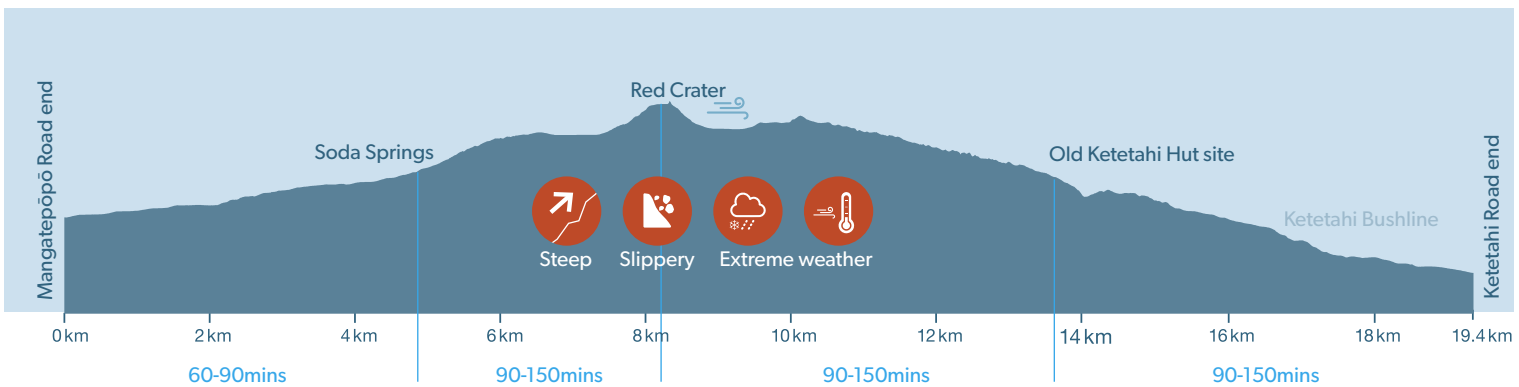


Kia ora and welcome to the

Tongariro Alpine Crossing

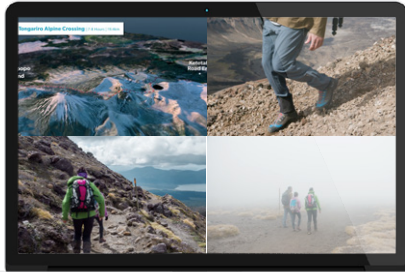


MAP SOURCE: Toitū Te Whenua Land Information New Zealand



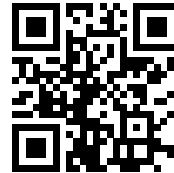
Prepare for your walk

Learn more about the track



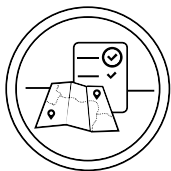
Watch the Tongariro Alpine Crossing Video for:

- Typical weather conditions
- Potential hazards
- Key tips and decision-points



Scan the QR code to watch the NZ Mountain Safety Council's walk-through video of the track on Plan My Walk app. Or visit planmywalk.nz and find the track.

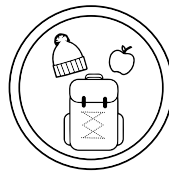
Follow the Land Safety Code



Choose the right trip for you



Understand the weather



Pack warm clothes and extra food

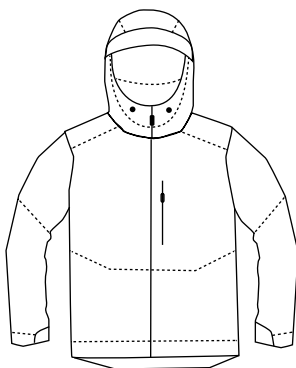


Share your plans and take ways to get help



Take care of yourself and each other

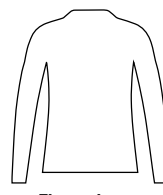
Sort your gear for the trip



Waterproof jacket



Mid layer insulation



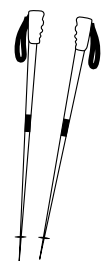
Thermal top (polypropylene/merino) layer



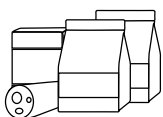
Sturdy footwear + socks



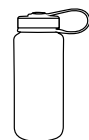
Mobile phone



Walking poles



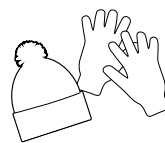
Food + snacks



2L of water



Sun protection



Warm hat + gloves



Headtorch + batteries

Find out more

mountainsafety.org.nz | avalanche.net.nz | planmywalk.nz

Brought to you by the NZ Mountain Safety Council 2021