

Park Guidelines

Please observe the following park regulations to ensure everyone's visit is pleasant.

Roads – Speed limits are 1) 45 mph on county roads, 2) 15 mph on park roads and 3) 5 mph in the campground. The campground loop is a one-way road to the right. Vehicles must remain on pavement while in developed areas of the park.

Camping – Camp only in designated campsites. Each permit covers one vehicle and any attached recreational equipment. There is an extra fee for additional vehicles or camping equipment. Up to eight people are allowed in a campsite.

Plants and animals – All plants, animals, minerals and other natural features in state parks are protected. It is unlawful to remove, alter or destroy them.

Vandalism – It is unlawful to mutilate or deface any natural feature or structure. Please help keep your park beautiful.

Littering – Please use waste containers.

Fireworks – Explosives, fireworks or firecrackers are prohibited unless authorized by the park manager.

Fires – Campfires may be built in specified areas. Most developed campsites provide fire pits or grills. Collecting and gathering firewood within the park is prohibited. Firewood is available for purchase from park personnel.

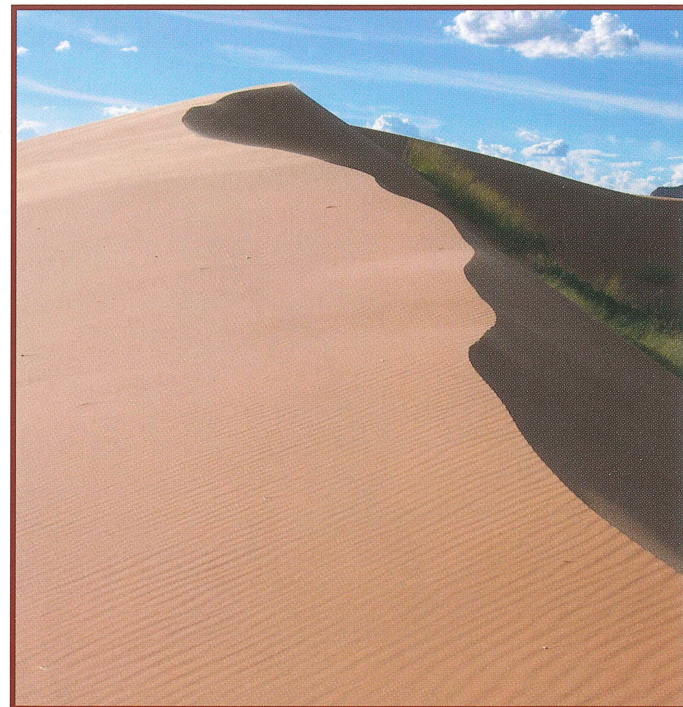
Pets – Pets are allowed in most Utah state parks, but must be on a maximum six-foot leash. Service animals are the only animals

admitted in park buildings. For safety and courtesy, please keep your pets under control.

Firearms – The discharge of weapons or firearms, including devices capable of launching a projectile are prohibited unless the weapon is used: (1) In the legal pursuit of wildlife; (2) With authorization by Special Use Permit; (3) In accordance with Utah Law; (4) By authorized law enforcement officers.

Wastewater – It is unlawful to dump or drain water from campers or trailers onto the ground or into lakes and streams.

Quiet hours – 10:00 p.m. to 9:00 a.m. MST.



Your park fees provide for the care, protection and enhancement of this park.

Park Location

The park is located 22 miles west of Kanab on Sand Dunes Road. Located 310 miles south of Salt Lake City.

Operating Hours

Daylight hours, seven days a week. No holiday closures.

Address Inquiries To:

Coral Pink Sand Dunes State Park
PO Box 95
Kanab, UT 84741
(435) 648-2800
coralpink@utah.gov
or
Utah State Parks and Recreation
P.O. Box 146001
Salt Lake City, UT 84114-6001
(801) 538-7220
stateparks.utah.gov

Scan the QR code below with your mobile device to visit the park website, stateparks.utah.gov/parks/coral-pink



Utah State Parks Mission:

To enhance the quality of life by preserving and providing natural, cultural and recreational resources for the enjoyment, education and inspiration of this and future generations.

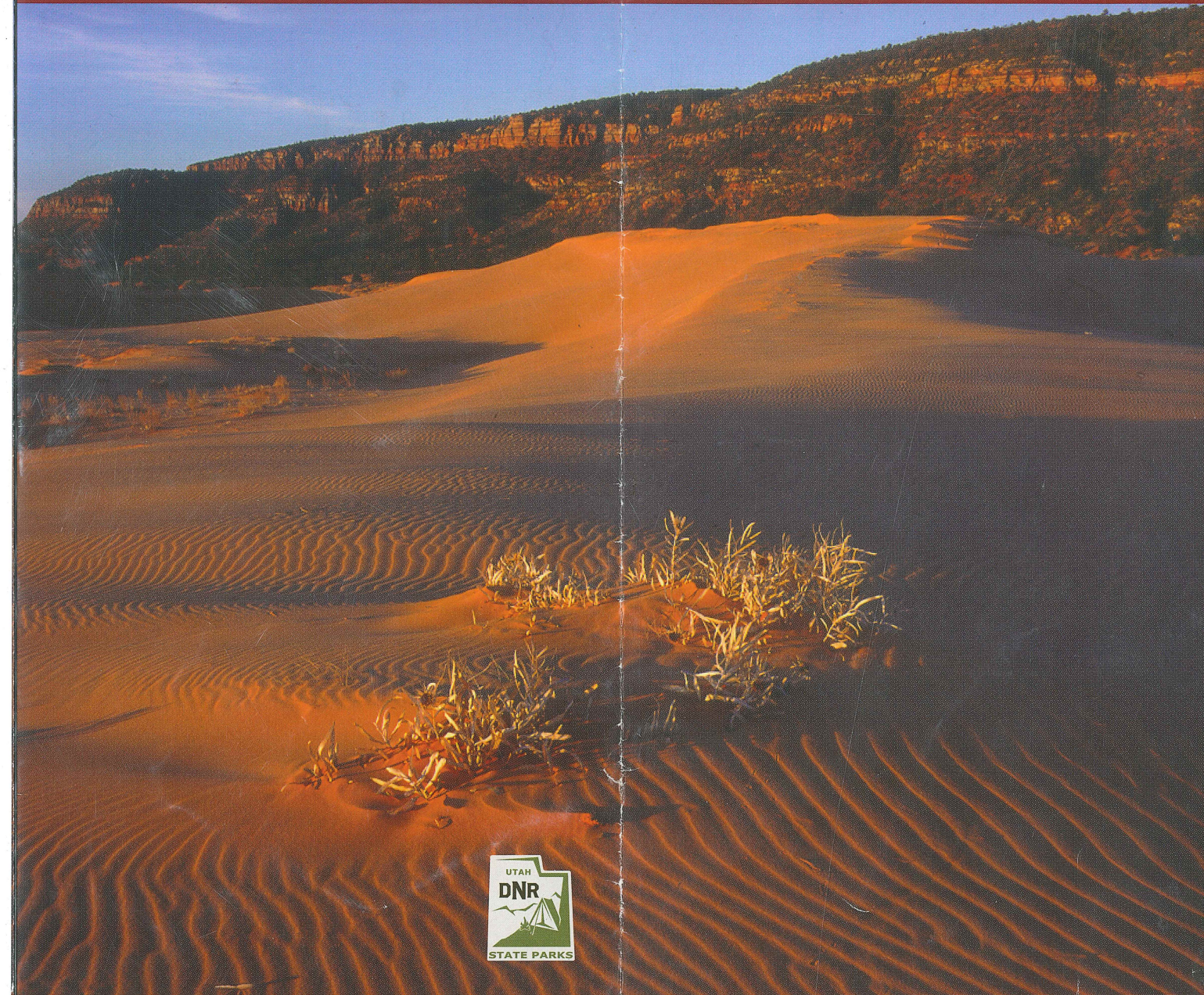
Tiger Beetle photo by Chris Wirth

Information contained in this brochure was accurate at the time of printing. Policies, facilities, fees, hours and regulations, etc., change as mandated. For updated information please contact the park.

Printed on recycled paper

9/17 30M

Coral Pink Sand Dunes State Park



DUNES STATE PARK

CORAL PINK SAND

Explore acres of colorful, sweeping dunes dotted with juniper and pinon pines at Coral Pink Sand Dunes State Park. Ride off-highway vehicles (OHVs) and dune buggies, or hike mountains of shifting sand.

Coral Pink Sand Dunes State Park is a popular destination for OHV enthusiasts who enjoy riding 1,200 acres of dunes. Approximately 90 percent of the Coral Pink dune field is open to OHV use.

The park was established in 1963 and serves as an access point to the sand dunes for a variety of recreation uses. Park rangers and staff work to protect the resource and provide for public safety.



Geology

Sand dunes are created by three factors: sand, high winds, and a unique influence upon those high winds. At Coral Pink Sand Dunes, a notch between the Moquith and Moccasin mountains causes this unique influence. Wind is funneled through this notch, increasing wind velocity to a point where it can carry grains of sand from the eroding Navajo sandstone.

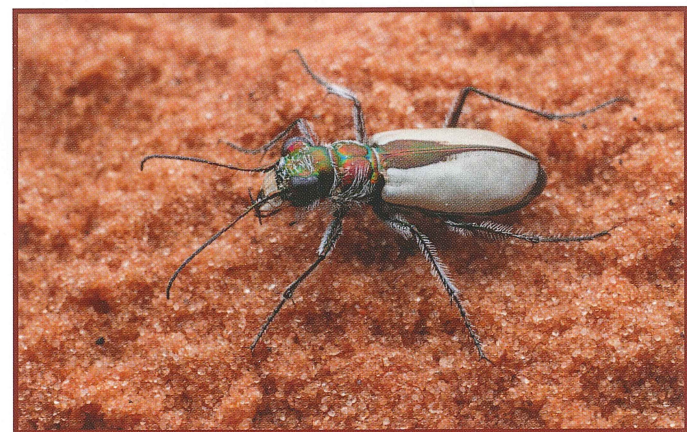
This phenomenon is known as the Venturi Effect. After the wind passes through the notch and into the open valley, wind velocity decreases, depositing the sand.



Plants and Animals

Located at an elevation of 6,000 feet, Coral Pink Sand Dunes receives relatively high amounts of precipitation. This moisture allows for a wide variety of plants, including stands of ponderosa pine, dune grasses more than six feet tall, and beautiful wildflowers that reach their peak in June.

Catch a glimpse of mule deer, coyotes, kit foxes jackrabbits, and many small rodents within the park. The dunes support a diverse population of insects, including the Coral Pink Tiger Beetle, which is found no where else in the world. Melting snow often creates small ponds on the dunes that support amphibians such as salamanders and toads.



Nearby Points of Interest

Coral Pink Sand Dunes is an ideal location to set up a base camp for exploring Utah's extraordinary scenery. Within a short drive are Cedar Breaks, Grand Staircase/Escalante, and Pipe Springs national monuments, Kodachrome Basin State Park, Lake Powell, and Zion, Bryce Canyon and Grand Canyon national parks.



Hiking

Wander the dunes and explore this interesting and unique landscape. Discover many interesting hikes adjacent to the park, including South Fork Indian Canyon pictographs. These ancient Indian rock paintings are located at the bottom of South Fork Indian Canyon. The trailhead is approximately four miles northeast of the park and is accessible via foot, OHV and four-wheel drive vehicle.

Conservation Area

A 265-acre conservation parcel serves as a resource management area for protecting the Coral Pink Tiger Beetle and its habitat. The remaining 1,200 acres of dunes are open to all types of recreational activities.

Camping

Adjacent to the dunes, camp in a modern campground with restrooms, hot showers, and sewage disposal station. Each roomy campsite provides pull-through parking, picnic table, and barbecue grill.

Bring a picnic lunch and select a day-use site, each with a table and barbecue grill. A group day-use area adjacent to the dunes offers a fire pit ideal for Dutch oven cooking.

Stroll along the one-half mile nature trail or the walkway, which extends onto the dunes and is accessible to visitors of all abilities.

A visitor center offers information about the park and surrounding areas, OHV safety, and also offers an interesting display of sand specimens from around the world.

Off-Highway Vehicles

Coral Pink Sand Dunes offers 1,200 acres of open riding area for OHV enthusiasts. OHVs must be currently registered and have an orange whiptail flag.

All operators must have a valid driver's license or state-recognized certification, and riders 17 and under must wear a properly-sized and fastened helmet at all times. Utah State Park Rangers strongly encourage all riders to wear helmets. OHV riders should contact park personnel for additional OHV laws and rules before venturing onto the dunes.

Adjacent to the park, riders will find hundreds of miles of trails on lands managed by the USDI Bureau of Land Management.

