

Harriman State Park of Idaho

A working cattle ranch and a playground for wealthy "easterners" who loved the mountains of Island Park.



Big Falls Inn, Mesa Falls

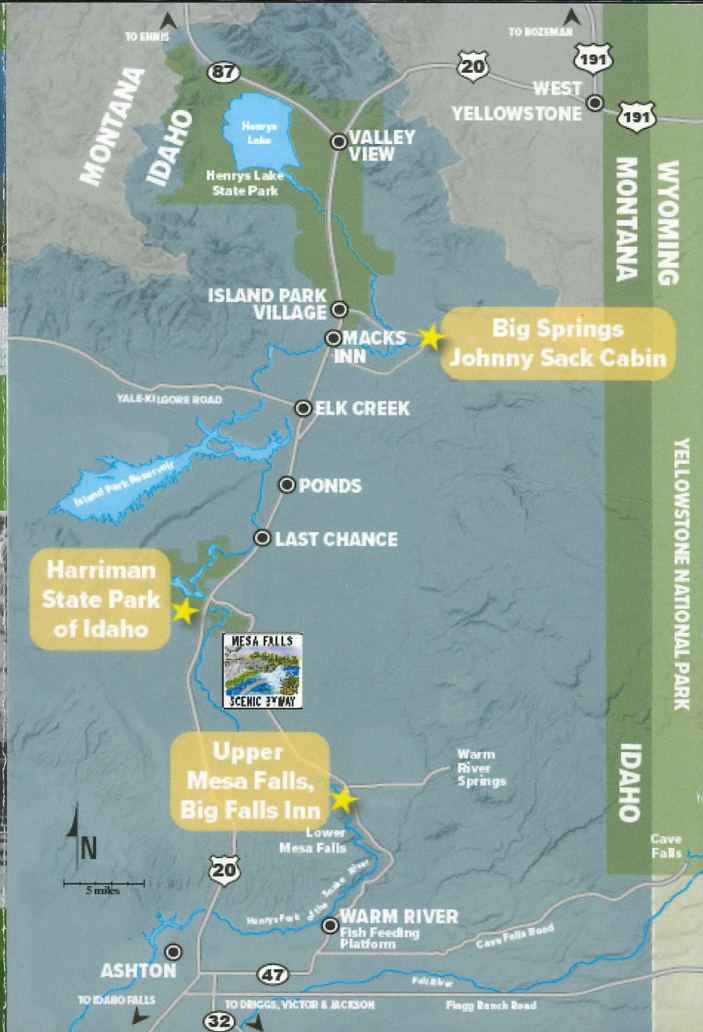
The proposed site of an electrical generation plant damming Upper Mesa Falls, which later became a stage stop.



Johnny Sack's Cabin, Big Springs

Johnny Sack's Cabin, a scenic log structure and near-by waterwheel built by Sack using only hand tools.

Each of the three sites are listed on the National Register of Historic Places.



For additional information regarding accommodations, camp sites, trails or group tours, contact:

US Forest Service

208-652-7442 | www.fs.usda.gov/ctnf

Harriman State Park of Idaho

208-558-7368

parksandrecreation.idaho.gov/parks/harriman

Fremont County Parks and Recreation

208-624-7266 | www.co.fremont.id.us



Fremont County, Idaho LOG CABIN TREASURES

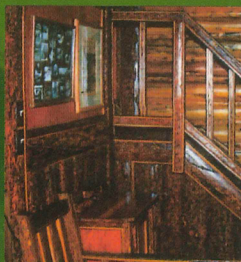


Woven together by time, history and the Henry's Fork of the Snake River, Fremont County boasts of three uniquely charming historic sites inviting you to stay "just one more day" in the heart of the Caribou - Targhee National Forest. Each site welcomes you to a time when visitors to the area were few and dreams abundant.



Johnny Sack Cabin, Big Springs

The Johnny Sack Cabin is located at Big Spring, the headwaters of the Henry's Fork of the Snake River in Island Park. It is the only remaining structure in an area once made popular by the availability of Forest Service lease land and a stop for the Union Pacific Railroad. Built by John Sack, a German immigrant, the cabin features a unique split bark design and quilt pattern wood floors. The interior of the cabin features furniture also handmade by Sack, as well as a collection of his hand tools. Located nearby is the waterwheel house which once generated electricity for the cabin. Standing only 4 ft. 11 inches tall, Sack built his cabin overlooking Big Springs, a series of natural springs which provides over 1 million gallons of water each day.

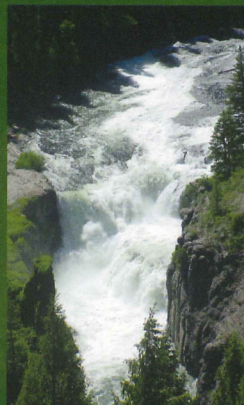


Big Falls Inn, Upper Mesa Falls



Big Falls Inn circ. 1914

Big Falls Inn, built between 1912-14 as the headquarters for the power plant that never was, is a historically significant example of massive peeled log lodges that were built at the turn of the 20th Century. The dam and the power plant were planned, but never built. Instead the area became a stage stop and hotel for travelers going to Yellowstone National Park.

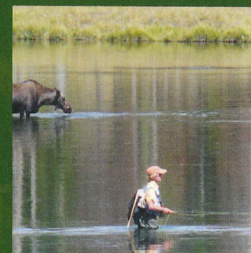
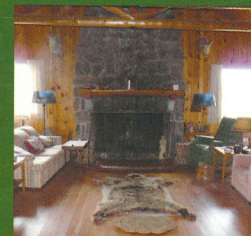


After extensive renovations, the Caribou-Targhee National Forest Service and the Idaho Department of Parks and Recreation opened the building in 1997 as a visitor's center. The Inn is part of the Mesa Falls Recreation Area featuring nearby Upper Mesa Falls at 114 feet and, downstream, the 65-foot Lower Mesa Falls.



Harriman State Park of Idaho

1902 marks the start of the "Railroad Ranch" when five shareholders of the Oregon Short Line Rail Road formed the Island Park Land and Cattle Company. Later, E.H. Harriman, Chairman of the Union Pacific Railroad, purchased shares in the ranch, but passed away before ever visiting. His family, however, enjoyed many summer visits and eventually purchased all of the shares in the ranch. In hopes of preserving the unique site, the 11,000 acres were donated, by the Harriman family, to the State of Idaho creating today's Harriman State Park of Idaho. This preserved park is now a wildlife refuge, providing visitors with ample wildlife sighting of elk, moose and trumpeter swans. Guests can visit 27 of the historic "Railroad Ranch" buildings including dining cottage, the Jones House and barns.



The Wimbledon of fly fishing: the Ranch section of the Henrys Fork