

Nearby Parks

If you're having a great time here, don't forget to visit one of the four nearby state parks!

Slide Rock State Park (16 miles) Named after the 80-ft sandstone chute, this stretch of Oak Creek is very popular with visitors looking to beat the heat. Hike the scenic Clifftop Nature Trail or tour the Pendley Homestead, and enjoy the beauty of Oak Creek Canyon. (928) 282-3034

Dead Horse Ranch State Park (19 miles) Nestled in the cool climate of Cottonwood, this park offers numerous recreational opportunities such as camping, hiking, mountain biking, canoeing, fishing, horseback riding, and more. Cabins and access to the Verde River are also available. (928) 634-5283

Jerome State Historic Park (27 miles) This park reveals the story of the city of Jerome inside the historic Douglas Mansion. The museum features photographs, artifacts, and minerals in addition to a video presentation and a 3-D model of the town with its underground mines. (928) 634-5381

Fort Verde State Historic Park (32 miles) Experience living history and life through the eyes of a frontier soldier. The fort was a base for General Crook's U.S. Army scouts and soldiers in the 1870s and 1880s. From 1865 – 1891, Camp Lincoln, Camp Verde, and Fort Verde were home to officers, doctors, families, enlisted men, and scouts. (928) 567-3275



Red Rock State Park

4050 Red Rock Loop Rd, Sedona, AZ 86336

(928) 282-6907 | 1-877-MYPARKS

azstateparks.com/red-rock

AZStateParks

Like/Follow/Watch us on:



01/22

Red Rock State Park is a 286-acre nature preserve and environmental education center with stunning scenery. Hiking trails wind through the park from the banks of Oak Creek to hills of red rock. The creek supports a diverse riparian habitat that flourishes with native plants and wildlife.

The park offers a variety of special programs for school groups and private groups. Check with the Visitor Center for daily and weekly park events, including hikes and nature programs.

Thank you for visiting!



1-877-MYPARKS | azstateparks.com

Hiking Trails

The family-oriented trail system is well-marked for the safety of our visitors. The 5-mile network consists of interconnecting loops leading to vistas of red rock or the lush greenery of Oak Creek.

The Eagle's Nest Loop and the Apache Fire Loop are joined together by the Coyote Ridge Trail. Eagle's Nest is the highest point in the park, with an elevation gain of 300 ft. These three major loops are connected by the Kisva Trail along the riparian corridor, which also leads up to the short loop of the Yavapai Ridge Trail. The Javelina Trail takes you into the pinyon/juniper woodlands and back to the other loops.

Bikes and horses are allowed only on the East Gate Trail.

Picnic Area/Shelter

Group day use areas are available for reservation, but may be used on a first-come, first-served basis. Reservations may be made up to six months in advance, except for wedding reservations, which can be made up to 12 months in advance.

Twin Cypress Ramada: Large covered ramada, which holds 13 picnic tables. Electrical outlets, water, and barbecue grills (charcoal only) are available for use. Maximum group size: 75

Habicamp Ramadas: Two ramadas hold seven picnic tables. Maximum group size: 50

Visitor Center Ramadas (not reservable): Two ramadas hold six picnic tables. Electrical outlets are available for use. Maximum group size: 50

Wildlife Viewing

There is abundant wildlife in the park with regular sightings of mule deer, javelina, coyotes, and bobcats, as well as a wide variety of birds. The park is part of the Lower Oak Creek Important Birding Area (IBA) and hosts diverse bird species every season.

Blacktail rattlesnakes are seen on occasion during the warmer months as well as tarantulas, lizards, and some non-venomous snakes.

Park Rules

General Rules

- Do not litter! "Leave no trace" and pack out what you bring in.
- Drive your vehicle only on designated paved surfaces. Park only in designated parking areas. Do not park on the side of the road.
- Stay on designated trails. Cutting trails degrades habitat and harms the landscape.
- Do not use glass containers in the park.
- All of our parks adhere to firearm and hunting regulations. Please familiarize yourself with this information.
- For the conservation of this park, we ask that you **leave your pets at home**. Service animals are allowed.

Fires

- Keep fires in grills or designated state parks fire rings. Never leave fires unattended!
- **Do not gather firewood in the parks.**
- Fireworks are not permitted in state parks.
- Be "fire smart" and check fire restrictions at azstateparks.com/fire-safety.

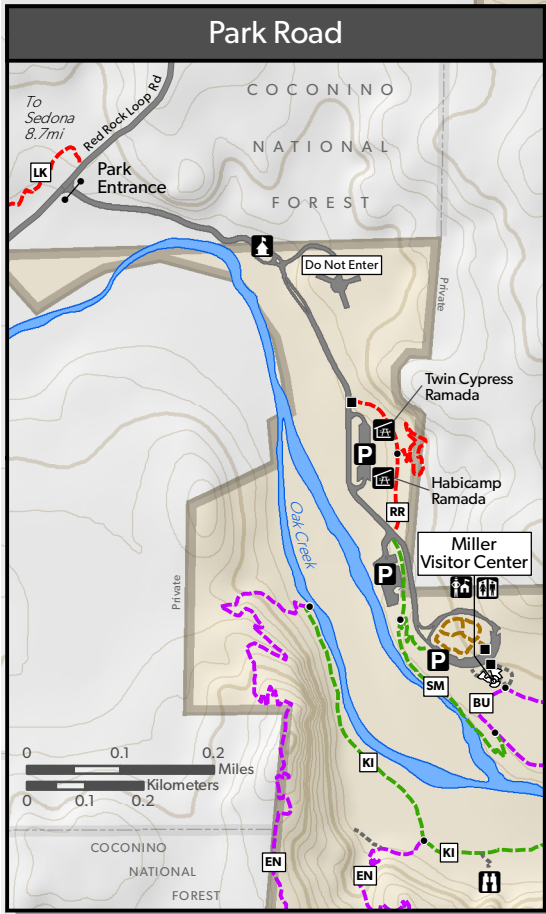


Additional Rules

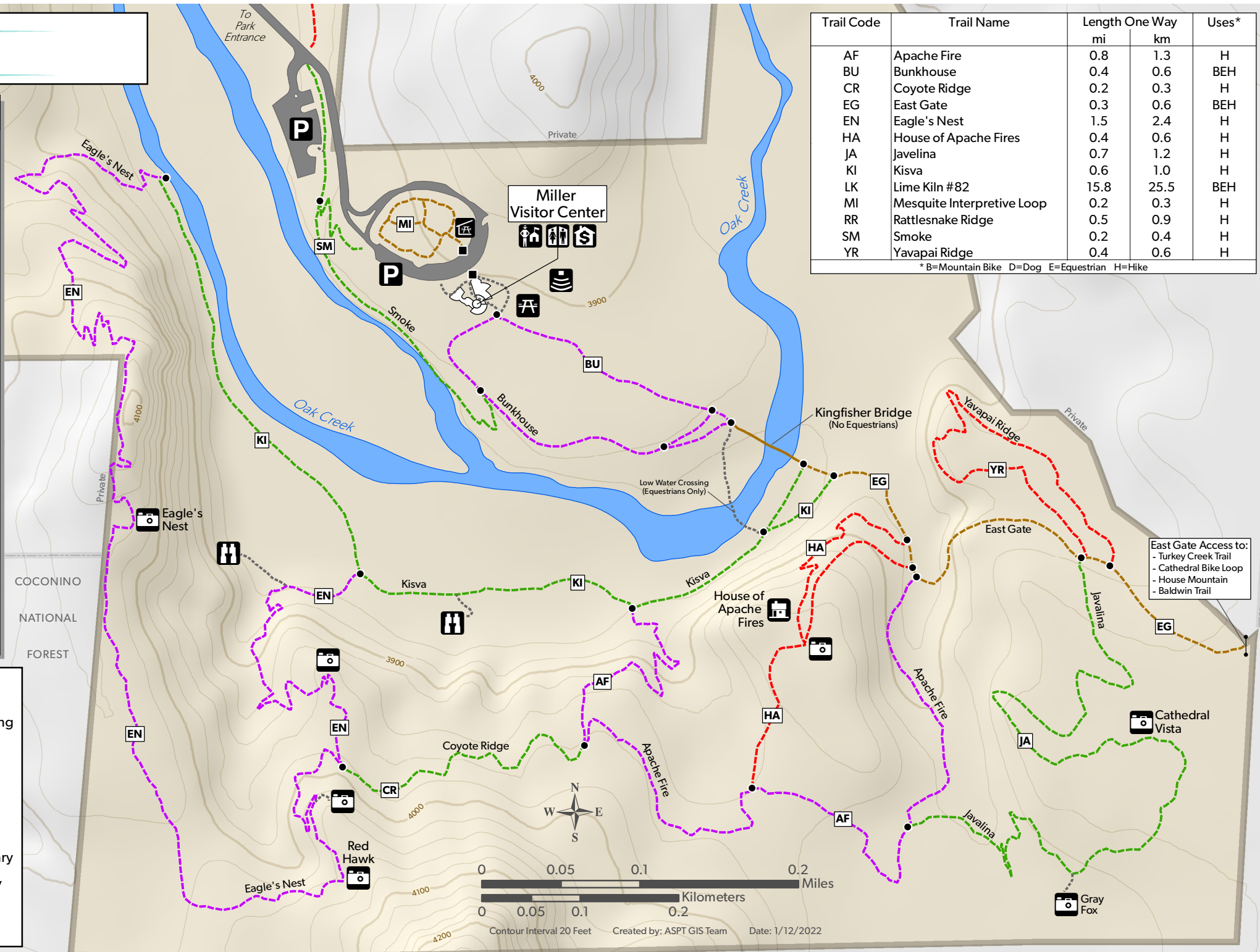
- For the conservation of this park, do not remove vegetation or rocks.
- For the conservation of this park, there is **no hunting, fishing, swimming, or wading**.

The rules of this park are not limited to the rules listed above. Additional park rules may be found at www.azstateparks.com.

RED ROCK STATE PARK



- | | | | |
|--|-------------------|--|------------------|
| | Contact Station | | Visitor Center |
| | Historic Building | | Wildlife Viewing |
| | Outdoor Classroom | | Junction |
| | Parking | | Trailhead |
| | Picnic Area | | Gate |
| | Ramada | | Trail |
| | Restroom | | Forest Boundary |
| | Viewpoint | | Park Boundary |



Trail Code	Trail Name	Length One Way		Uses*
		mi	km	
AF	Apache Fire	0.8	1.3	H
BU	Bunkhouse	0.4	0.6	BEH
CR	Coyote Ridge	0.2	0.3	H
EG	East Gate	0.3	0.6	BEH
EN	Eagle's Nest	1.5	2.4	H
HA	House of Apache Fires	0.4	0.6	H
JA	Javelina	0.7	1.2	H
KI	Kisva	0.6	1.0	H
LK	Lime Kiln #82	15.8	25.5	BEH
MI	Mesquite Interpretive Loop	0.2	0.3	H
RR	Rattlesnake Ridge	0.5	0.9	H
SM	Smoke	0.2	0.4	H
YR	Yavapai Ridge	0.4	0.6	H

* B=Mountain Bike D=Dog E=Equestrian H=Hike

East Gate Access to:
 - Turkey Creek Trail
 - Cathedral Bike Loop
 - House Mountain
 - Baldwin Trail

0 0.05 0.1 0.2 Miles
 0 0.05 0.1 0.2 Kilometers
 Contour Interval 20 Feet Created by: ASPT GIS Team Date: 1/12/2022