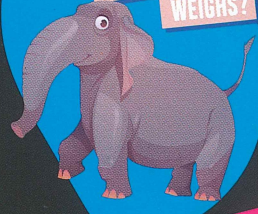


# CAN YOU ANSWER THESE QUESTIONS?

You'll find the answers to these questions dotted around the tower, look out for the signs below.

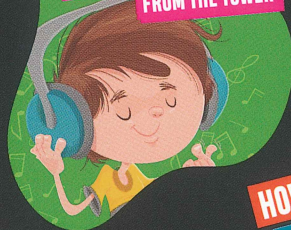
**HOW MUCH**  
DO YOU THINK  
THE SKY TOWER  
WEIGHS?



**CAN YOU**  
GUESS WHEN  
WE LIGHT THE TOWER  
RED & GREEN?



**HAVE A GUESS**  
HOW MANY RADIO  
STATIONS BROADCAST  
FROM THE TOWER



**DO YOU KNOW**  
HOW FAR YOU  
DROP WHEN YOU BRAVE  
THE SKYJUMP?



**HOW TALL**  
IS THE SKY TOWER?



## WANT TO WIN AN ANNUAL ADULT PASS?

Tell us about your trip and go in the draw!



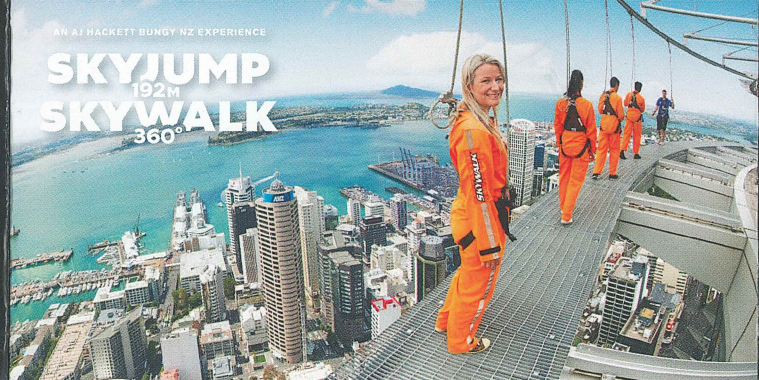
SCAN HERE



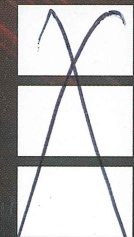
Stay connected and share your experience with us by using @skytower\_nz



**IT'S ALL HERE**   
All Attractions, one location



**YOUR JOURNEY BEGINS**



ADULT  
CHILD  
SKYSLIDE



# Nau mai, Haere mai. Welcome to sky TOWER



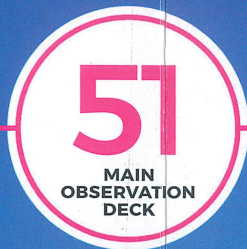
Start at our glass-fronted lifts, as you're sent 186 metres into the sky in just 40 seconds. Don't forget to look down!



Take in the 365° views and check out the window stickers pointing out spots of Tāmaki Makaurau.



Keep an eye on the SkyJump viewing area and spot someone taking the ultimate leap of faith, plummeting off the Sky Tower at 85km per hour.



Are you ready to ride SkySlide? Our new Virtual Reality slide! Add it on to your ticket today for \$15.



If you're feeling brave, make sure you take a walk on the glass floor. Did you know the glass is stronger than the concrete surrounding it?

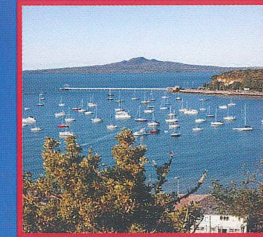
Take your selfie to new heights with our extreme selfie!

Compare the Sky Tower against some of the most famous buildings in the world.

Use the binoculars to spot key landmarks and other historical locations within the greater Tāmaki Makaurau area.

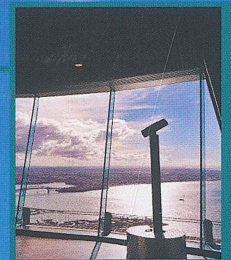


Next up, look out for the Sky Deck sign and enter the lift for a ride up to our highest viewing platform, Level 60 at 220m!



How many of the 53 volcanoes in Auckland can you spot from up here? Many of the volcanoes are summits but keep an eye out for some of the lakes formed when the craters filled with water.

Tip: Use the binoculars!



Don't miss a stop in Sky Café for the highest snack with panoramic views of Tāmaki Makaurau.

## SKY CAFÉ



Visit our activity area for some family fun!



Take a step back in time to learn all about the construction of the Sky Tower in our history area.

On your way out, grab a souvenir from your visit in our Gift Shop and check out your photos.